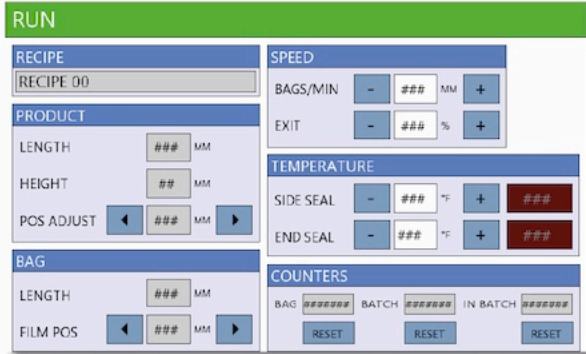
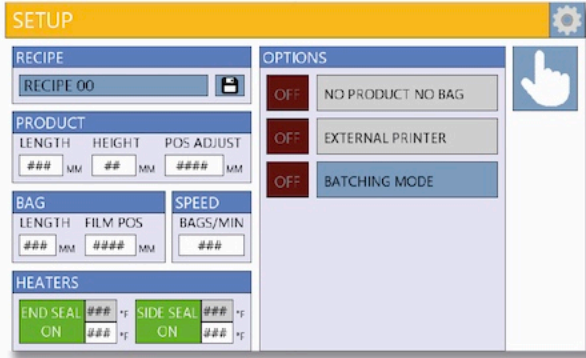


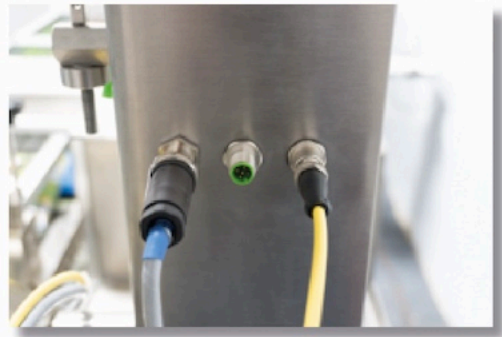
**INTUITIVE HMI DESIGN**



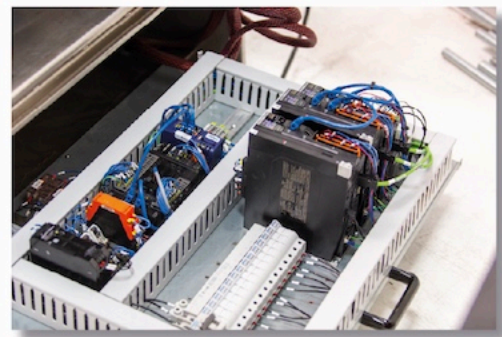
**HEAVY DUTY EXTRUDED & ADJUSTABLE LEGS**



**BUILT IN PORTS FOR PRINTER, ENCODER & EYE MARK**



**UL508A STANDARD**



**EASY THREAD DESIGN**



**ADDITIONAL SERVICES WE OFFER**

- ▶ In-House Financing
- ▶ Short Term Rental
- ▶ Prepaid Maintenance
- ▶ Remote Troubleshooting
- ▶ In House & On Site Training



  
**PACKAGING**  
 MADE EASY  
 909.263.7600  
[www.packagingmadeeasy.net](http://www.packagingmadeeasy.net)

 EMAIL US  
 WATCH ME

  
**PACKAGING**  
 MADE EASY



  
**ATHENA<sup>S3</sup>**





# HORIZONTAL FLOW WRAPPER



## FEATURE HIGHLIGHTS

- ▶ **Omron Control System**  
The Brain
- ▶ **3 Omron Servo Motors**  
The Engine
- ▶ **Up to 150ppm\***  
The Power

- ▶ **7" Omron HMI**  
The Display
- ▶ **304 Stainless Steel**  
The Body
- ▶ **USA**  
The Production

- ▶ **Remote Login Support**  
The Support
- ▶ **NPNB (No Product No Bag)**  
The Technology
- ▶ **APC (Athena Power Conserve)**  
The Consumption

## STANDARD FEATURES

- ▶ Complete 304 stainless steel construction  
(powder coated version also available)
- ▶ 5.5ft Lugged Standard Infeed
- ▶ 7.75" Wide Sealing Jaw
- ▶ Zig Zag Knife
- ▶ Pair of jaws with cross serration parallel to the knife
- ▶ Fin seal-propelling rollers 1st pair cold, 2nd pair hot
- ▶ 18" Film Reel Mount
- ▶ Self-Centering film shaft
- ▶ Adjustable Forming Plow
- ▶ Easy thread film design
- ▶ Dual Temperature Controlled Jaws (Built in HMI)
- ▶ (NPNB) No Product No Bag
- ▶ Up to 99 product presets
- ▶ Recipe management incl. temperature
- ▶ EWON cozy, remote troubleshooting access with secure VPN tunnel
- ▶ Omron PLC, coordinated servo motion control
- ▶ 3 axis coordinated motion servo system
- ▶ 7" Omron Color HMI touch screen
- ▶ UL508A Standard Control Panel Design

## STANDARD ELECTRIC & PNEUMATIC SUPPLY

- ▶ 220VAC, 15Amp, 1-Phase
- ▶ 8 CFM at 80 psi of clean, dry compressed air



## OPTIONAL UPGRADES

- ▶ 3m/9.8ft or 4m/13ft Extended Infeed
- ▶ Dual Sealing Jaw
- ▶ 4.5" Height Opening
- ▶ Sealing Blade  
(Straight, Diagonal, V-Notch, Slit Notch)
- ▶ Thermal Jet Printer

## PACKAGING MATERIAL

- ▶ BOPP
- ▶ PE
- ▶ Metalized
- ▶ Printed Films
- ▶ Most Heat Sealable Film